

**OFFICIAL GUIDE**

## **Index to Illustrations, etc.**

	Page
Abersoch Village .....	5 and 7
High Tide .....	9
Golf Club .....	11
Porth Mawr .....	13
Bathing Huts .....	15
Sub-Tropical Garden .....	17
The Breakwater .....	19
Mouth of the River .....	21
Distances to Places of Interest .....	21 and 23
The Boat Landing .....	23
The Public Hall and Postal Information .....	25
Map of Abersoch and Lley Peninsula .....	28 and 29
The Bay of Abersoch .....	27
The Harbour .....	29
List of Sunday Services.....	33 and 35
Llanengan Church .....	35
A Pretty Harbour .....	37
Porth Neigwl .....	39
Abersoch Pass .....	41
The Golf Links .....	43
Aviation .....	45
Sand Dunes .....	47
Glyn-y-Weddw .....	49
Tocia Motors .....	55

## **List of Apartments.**

See Pages 50, 51, 52, 53 and 54

# ABERSOCH

1930

## Official Guide

Price sixpence

---

List of Hotels, Boarding Houses  
Apartments, Tradesmen, etc

Illustrated by  
Copyright & Original Photographs

PUBLISHED BY THE

ABERSOCH RATEPAYERS'  
and ADVERTISING ASSOCIATION

For further information apply  
Mr TED ROBERTS. Secretary  
PARAGON STORES, ABERSOCH

Tel. 7.

Printed by  
H & W Powlson . Colwyn Bay



Tel. 4

# Vaynol Hotel

(H. J. Parry)

Family and Commercial  
Abersoch

---

LUNCHEONS AND TEAS  
EXCELLENT SERVICE  
CLOSE TO BEACH and GOLF

---

**MOTORS FOR HIRE**



Copyright Photo

G.O.Jones

## ABERSOCH

**T**HE beautiful Sea-Side Resort of Abersoch is situated on the Lleyn Peninsula, which is part of the county of Caernarfonshire, in North Wales. It is seven miles from Pwllheli Railway Station, from which there is a regular service of comfortable motor buses. The road is direct, fairly level, and bounded on either side by exceedingly pretty scenery.

ABERSOCH derives its name from the river Soch "Aber" meaning mouth, and "Soch" the river which divides the parishes of Llanengan and Llangian. The former parish comprises the headland or promontory of Penrhyn Du, extending into St. Tudwal's Roads in St. George's Channel, pleasantly situated at the southern extremity of the county. One of the chief features of Abersoch is that there are several shores, each with its own particular attraction, in close proximity to which are the houses where Visitors find accommodation.

ABERSOCH Town (or Village, as some may choose to call it) consists not only of houses of small size, nicely situated and in good state of preservation, occupied by people who make a

# Owen Williams & Son

Builders & Roads Contractors,

## Caernarvon & Abersoch.

---

Nothing too small            ::  
   ::    Nothing too large

ESTIMATES SUBMITTED.

---

Prompt Attention. Personal Supervision.

---

Telephones : CAERNARVON **165.**  
   ABERSOCH **21**



*Caernarvon Address :*  
*“ARGRAIG”*  
*Ael-y-Garth*

*Abersoch*  
*Address*  
*“BELMONT”*



Copyright Photo

Abersoch Looking South.

Lillywhite Ltd

speciality of cleanliness and order, but there are also numerous houses of modern construction, as will be seen by the advertisements at the end of this book The town has a good system of drainage, assisted by an elevation conveniently high to suit every requirement.

#### SHOPS.

There are numerous Shops making provision for every need, as will be seen by the advertisements in these pages.

#### BANKS.

Barclays, The Midland, and The National Provincial have branches at Abersoch.

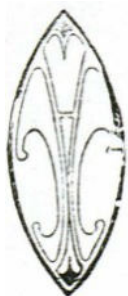
#### PLACES OF WORSHIP.

There are nine places of public worship, at most of which English Services are held during the summer months ( See- pages 29 and 31)

# MONTE BELLO

(Private Hotel)

## FIRST CLASS



ONE MINUTE WALK FROM VILLAGE AND  
BEACH, WITH BEAUTIFUL VIEW OF SEA AND  
MOUNTAINS.

---

### **LARGE GARAGE**

Telephone No 23  Telegrams: "Montebello"

---

Proprietress :  
**K E OWEN.**



Copyright Photo

Lillywhite Ltd

High Tide Abersoch .

The following advantages of ABERSOCH, as a health and pleasure resort, are summarised by a well-known medical gentleman who has spent much time in the district :

- (i) It is beautifully situated on the shore of Cardigan Bay and is protected from the North and North East by a range of mountains 1, 000—3, 500 feet in height.
- (ii) The climate is mild in winter, there being practically no snow and frost. In the summer it is a bracing and life-giving health resort.
- (iii) The beach is indisputably second to none for bathing purposes, and is nearly all sandy in nature, with hardly any shingle.
- (iv) There are acres of sand-burrows open to the public and there are no houses overlooking the beach.
- (v) Abersoch is famous for its fishing boats and yachts, also bathing tents. Its natural harbour affords splendid protection to them from rough weather. Navigation is safe, and deep-sea fishing give splendid sport.
- (vi) A new Waterworks Company has been started and gives a good supply of water. Those houses outside the boundary get their supply from private wells sunk deeply in their own private grounds, and it is plentiful.

# Abersoch Golf Course

## GENTLEMEN :

President : EDWARD WINTERBOTHAM Esq.

Captain : J.C. FINLAY, Esq

Hon Treasurer : Capt J . WILLIAMS,  
Rockdale, Abersoch

Hon Sec : H.J.PARRY Esq.,  
Tel 4 .                      Vaynol Hotel Abersoch,

---

Golf Club House : Telephone 22

Professional : J. P. GRIFFITH

## LADIES :

Captain : Miss HENDERSON, The Shanty

Hon. Sec : Mrs. PARRY, Vaynol Hotel  
Abersoch (Tel 4)

---

The Golf Course was laid out on 1908 by Mr. Harry Vardon and is one of the best 9-hole courses in Great Britain A few local residents set the ball rolling , and very soon had the the nucleus of a Club. In those days, Abersoch was comparatively unknown, and the club was kept going by the enthusiasm of of the few .



Copyright Photo

Golf Club House

Lillywhite Ltd

(vii) There is a 9-Hole Golf Course that can be compared with any in North Wales.

(viii) The place is quiet and unmolested by the noise of business, and traffic, There are many attractions in the neighbourhood for the person on holiday, the student and the antiquarian.

(1) The Memorial Hall, with its new Billiard Room (2 Tables), Library and Tennis Ground

(2) The ancient Parish Church of Llan-engan, or Emion, who lived in the sixth century and built the first Church. He was buried inside it. The Church is well worth a Visit, to see the remarkable rood screen, the miserere stalls, the Saint's coffer, the Well, the three Bells, and the old Latin inscription.

(3) The tumuli or barrows called Castellau, or small forts, and probably the graves of some warriors of remote times : 'Castell Cilan, Tanyrallt Castle and Frongaer Fort

(4) There quite a variety of birds, and some very rare ones. Also rare plants, ferns, butterflies and moths,

Established  
1899



Telephone  
Abersoch 10

**W. & G. WILLIAMS**

**MOTOR ENGINEERS and REPAIRERS**

**GENERAL DEALERS and CONTRACTORS**



**SAW MILL**



**Timber Yard and Garage  
ABERSOCH**

Motor Tyres and Accessories. Motor Spirit and Oil  
Accumulators Charged

---

**REFRESHMENTS ON BEACH.**

**OUR BATHING BUNGALOWS ARE  
THE MAIN FEATURE Of The BEACH**

(see opposite)

Do not fail to write for particulars .

**Car Park immediately behind Bathing Huts.**

---

**A.A Agent**

**LOCK-UP GARAGES**



Copyright Photo

Port Mawr and Yacht club

Lillywhite Ltd

PORTH MAWR is undoubtedly the favourite beach of most of the Visitors; where the bathing huts, boats and canoes are to be found, and where hundreds of people of all ages enjoy themselves in various ways. Persons visiting this part for the first time during the summer months wonder where all the happy folk come from. As a matter of fact, Abersoch has been "discovered" by motorists, and is fast becoming famous as a holiday resort. This beautiful bay is quite remarkable for the clearness of its water and silver sandy beach, and is a perfect delight for those who wish to sport about or indulge in the latest fashion of sun bathing. Furthermore, it is interesting on account of the varied views, and the two islands of St. Tudwal a short distance from the southern headland. Upon the larger island are the remains of an ancient chapel (now converted into a barn) with beacon light, which was dedicated to St. Tudwal, from whom the extensive Roads of the coast derive their name. St. Tudwal's Roads afford good anchorage for the largest of ships or passage-way, to the refuge of the Bay from the dangers of "Hell's Mouth" around the corner.

# Wayside Cafe

## ABERSOCH

( Opposite the Bus Stop)

OPEN FOR THE SEASON

---

All cakes are Home -Made and  
**FRESH DAILY**



RAISED MEAT PIES and MEAT ROLLS  
TO ORDER.

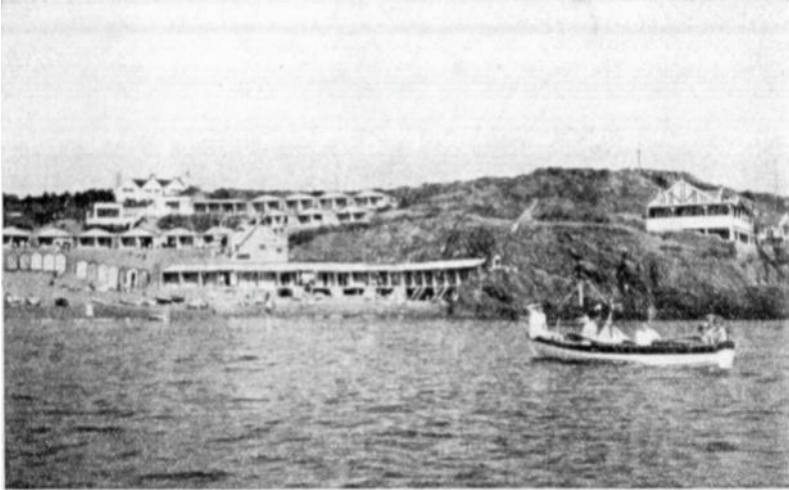
*:: Morning and Evening Coffees ::*

---

Business Hours : 8.30 a.m to 9.0 p.m

---

Proprietress : Miss ANDREW.



Copyright Photo

G.O.Jones

The Bathing Huts

From Pen Benar the mountains of Snowdonia, including in the distance the summit of Snowdon and Cader Idris, a distance of about thirty miles, are usually visible . To the north are the Rivals , and close at hand the promontory of of Llanbedreg. From an elevation above Sarn Bach, beyond Abersoch the Wicklow Mountains of Ireland can sometimes be seen

Another shore , further south , beyond the lifeboat station , called PORTH BACH, is well worth visiting.

Also PORTH CEIRIAD BAY. A stretch of hard sand bounded by lofty cliffs , will compare very favourably with some of the famous Bays of Cornwall. Facing almost due south and bounded on the east by the rugged rocks of Wylfa Head on the west by Cilan Head

PORTH NEIGWL, also an interesting bay, is illustrated on page 35

H.R.R

Phone 7 is.....

Roberts'

Paragon Stores

THE VISITORS' HAUNT

and has been for years because of the  
Excellent quality of

Grocery, Confectionery,  
Fruit and Vegetables  
Supplied

————— :: —————

**Our home-made Bread is Unrivalled.**

————— :: —————

*SPLENDID SELECTION of LOCAL VIEWS  
STATIONERY :: CRESTED WARE.*

Agents for Leading firms of Mineral Waters.



Enquiry Office for The Toccia Motors, Ltd., G.W. .  
and L.M.S Railways



Copyright Photo

Lillywhite Ltd

A Lovely Tropical Garden, Abersoch

There can be no better evidence of the genial nature of the climate of a particular district than a study of the plants which grow and flourish in the locality.

At Abersoch there are many kinds which it would be expected could only be found at the Riviera, or perhaps in the most favoured districts of the South West Coast of England.

To mention only a few of the many kinds growing outdoors at Abersoch : there are Phoenix ( Date Palm) with boles 36 inches in circumference , Cycads as large, Chamerops palms 18 feet high, Acacias ( the Wattle Flower ) of tree-like size which flowers throughout the winter, Cordylines or Dracaenas are comparable in size with the largest in Torquay - all of which flourish without protection and withstood the winter of 1928-29 . Hydrangeas grow into enormous bushes and form a feature in many gardens of Abersoch.

H . WHEELER, F. R.H.S

The Passion Flower is also to be seen flourishing out of doors.

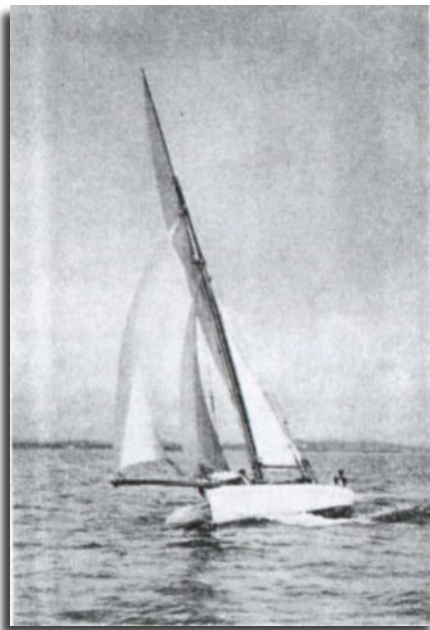
-Ed.

IF YOU ARE INTERESTED IN BOATS, YACHTING, FISHING ETC.  
... GET IN TOUCH WITH ...

# S. C. STAVELEY

Phone 25      YACHT STORES      station :  
Residence, 35      ABERSOCH.      Pwllheli

Yachts , Motor Boats and Dinghies for Sale and Hire



PAINTS , VARNISH'S AND ENAMELS.

Marine Motors Supplied      Yacht and Boat Fittings

Ropes, Twines of every description

Repairs, alterations, painting and Overhauls

Personally supervised

Moorings for Sale and Hire.      Fishing Tackle

By arrangement my Motor Launch, "Frolic" will  
take you Delightful Trips in the Bay, fishing, etc.

Also Trips to Bardsey Island



Copyright Photo

G.O.Jones

Pen Cei and Breakwater

ABERSOCH is the ideal place for boating. The BREAKWATER affords shelter for the smaller craft. Few places, if any in North Wales, are so fortunate as to be provided with a landing place and a refuge so beautifully placed. If, as is sometimes said, "every picture tells its own story" surely the little picture above speaks for itself

To the right of the picture is part of the headland, PEN BENAR, the rendezvous of all visitors to Abersoch.

Regattas, Fetes, Shows and sports of various kinds are held during the year at Abersoch and neighbourhood.

To hold the haven calm and still  
Now stands a good sea wall,  
Which native work and local skill  
Designed and built for all :  
In truth 'tis "well and truly laid"  
With all expenses duly paid  
Anon

# Glandulyn Stores & Cafe

ABERSOCH  
FOR

PURE BREAD }|@ CONFECTIONERY

Bride Cakes a Specialty.

High-Class Groceries }|@ Provisions

CHINA :: TOYS :: HARDWARE

-----

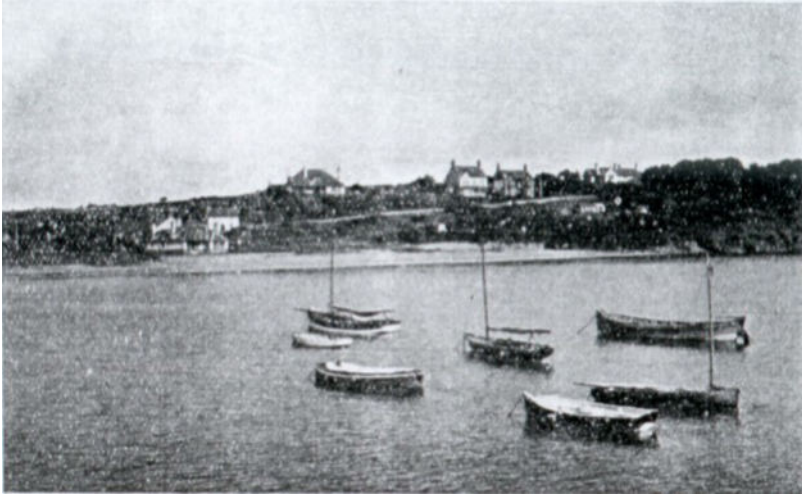
The only CAFE open all year  
Round  
Special Terms for large Parties,--  
Send for them

-----

Note . -- THE SHOP BY THE BRIDGE

**C DAVIES & SONS**  
(Proprietors)

Phone No 37



Copyright Photo

The Mouth of the River

Lillywhite Ltd

Here is the shore by the Harbour, skirted by wonderful rocks reaching to Castell - March Beach and on towards Llanbedrog, three miles way.

This natural harbour is much resorted to by artists on account of its quaint and singular beauty

---

#### **DISTANCES, &C ., OF PLACES OF INTEREST IN THE NEIGHBOURHOOD**

**Pen Benar.** - The headland a few minutes from the main road, with cliff walks

**The breakwater or Stone Jetty.**- Near the mouth of the river Soch. Affords protection and landing place for the many kinds of sailing craft, and motor boats. Etc.

**The sand Dunes and Moors.,** extending along the shore, give an air of freedom and are practically unrestricted.

**Llanengan Church.** One and a half miles: Of great historical interest

**Llangian Village and Church.** One and a half miles: a pretty village well worth a visit

**Pen- Y -Gaer** - One and a quarter miles : an ancient stronghold from which splendid views are obtained. Said to be the most beautiful spot on the coast

**Life-boat house and Porth Bach.**- Two and a half miles the Porth is a small bay bounded by rocks . A pleasant walk along the coast.

**Port Ceiriad.**- Two and three quarter miles: on the coastline line beyond Abersoch Bay; has several caves for inspection

Quick Service & Satisfaction

Obtained at

# Talafon Stores, ABERSOCH

Phone 11

High class groceries & Provisions  
Bakers. Agents for Bermaline bread.

Terry and Cadbury's Chocolates  
always Stocked

---

Drapery. Agents for Chilprufe & Wolsey  
Underwear  
Bathing costumes, Latest Styles.

---

We always aim at maintaining our present  
High Quality. WE INVITE you to compare  
our prices with any First -class Store

**ABEL WILLIAMS & SON**



Copyright Photo

Lillywhite Ltd

The Boat Landing , Abersoch

#### **DISTANCES, OF PLACES OF INTEREST ( continued )**

**Porth Neigwal (or Hells Mouth).** - Two and three quarter miles:  
A bay traversed by cross-currents, rendering it dangerous to shipping , never the less a most interesting shore

**Llanbedrog and Glyn-Y-Weddw.**- (The widows Glen).- Three miles : noted for its picture gallery, beautiful gardens and cliff walks

**Cilan Head.**, Three and a half miles. : commanding fine views .  
Has a Cromlech .

**Pwllheli** . Seven miles: a market town and well known watering place ; railway terminus.

**Nanhoron and Garn Fadryn.** Seven miles: The wooded valley of Nanhoron is exceedingly pretty and the hill, Carn Fadryn beyond is a fine vantage point

**Nevin** - Eleven miles; a quiet seaside resort on the North Wales Coast

**Aberdaron** .- Twelve miles ; a quaint village by the sea ; a landing place for boats from Bardsey Isle

Phone 98.

# J. R. TOLEMAN,

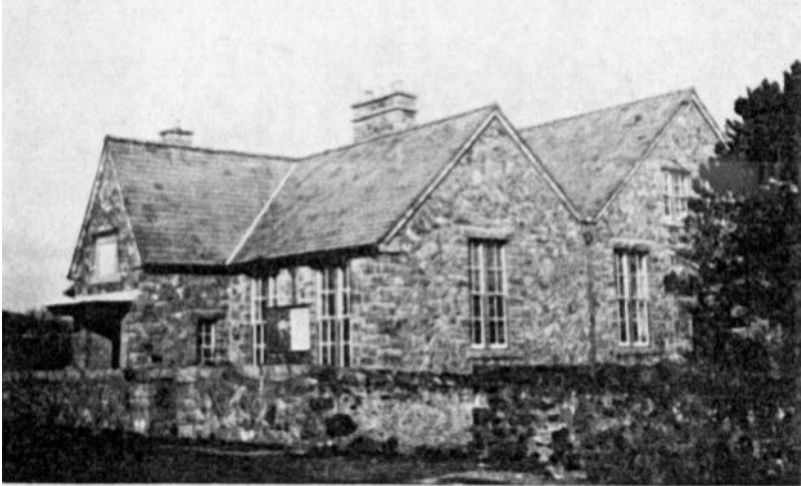
Sanitary Engineer,  
HALL ROAD  
ABERSOCH



Modern sanitary fittings, Rain Water and Soil Pipes  
Hot Water Boilers and Fittings  
Estimates Free

---

**REPAIRS PROMPTLY EXECUTED**



Copyright Photo

The Public Hall.

G.O.Jones

The Public Hall, situate in the centre of Abersoch, is a great acquisition. The larger room, capable of seating 250 people, is available for dances, concerts and entertainments : also Badminton, etc. There is a billiard Room with a full size table, a Library replete with interesting books : and in the grounds two Tennis Courts and Clock Golf course

---

### ABERSOCH POST OFFICE

(Situate near the Harbour)

#### **Hours of business:**

WEEK-DAYS (exWeds.) 9.0 a.m to 12.30 p.m  
and 1.30.pm to 7.0 p.m

Wednesdays.....9.0 a.m to 1.0 p.m

Sundays.....9.0 a.m to 10.30 a.m

Bank holidays.....9.0 a.m to 10.30 a.m

Between 12.30p.m and 1.30 pm on Week - Days

Telegrams can be handed in at the H.ouse door

Delivery of Letters on Week-days 7.45 a.m and 5.15 .pm

Dispatches -- Letter box cleared 8.0 a.m and 4.30 .p.m

N o Sunday delivery or dispatch.

## Abersoch

The village of Abersoch has undergone many changes, from a sleepy backwater of yesteryear to the thrusting vibrant village of today. Although it may come as a surprise to many that the village and the area was as popular a seaside destination more than a hundred years ago as it is today. This reconstructed brochure is from 1930 and is recreated as faithfully as possible from a rare surviving, rather torn and dog eared original, pages 24 - 25 were missing and have been replaced by a section from the 1918 XL13 Os map and page 1 of the 2003 brochure for comparison. In order to give a 'clean' look most of it has been retyped copying the original fonts and only a few areas have been scanned .

It would also be something of a surprise for visitors to this area to know that for many centuries this was a very industrial area With its Lead mines and quarries providing employment for many local and migrant people. Cornwall provided much of the expertise for the mining , with A Cornish engine house. Cornish Entrepreneurs, Managers and Miners down to a “ Barracks” block called Cornish row. Yet somehow in spite of all the industry and activity going on here the village remained largely unchanged until after the first world War 1918 . It is interesting to look at post cards of the beach and see how many of the features which were prominent then are still visible today.

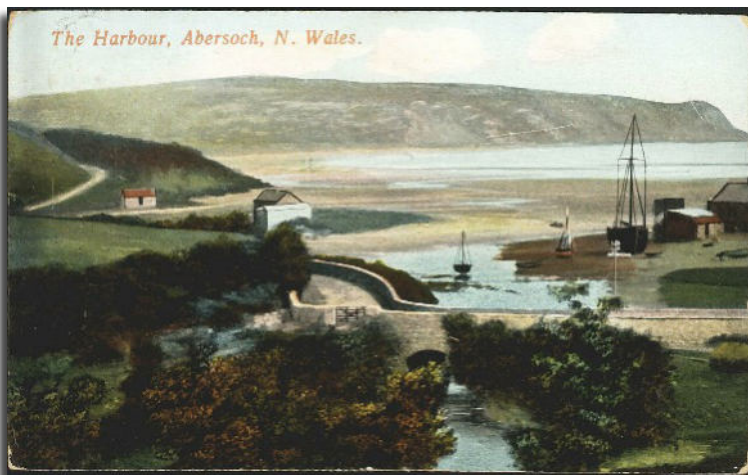
I have chosen a few postcards from my collection to help illustrate the brochure further but have put them in as extra pages so as not to detract from the original publication. The dates where given are the franked date on the stamp. Although it is difficult to know the working life of a postcard it can be reckoned that unless a substantial change was made to the area there would be no need to republish the cards, thus a postcard dated 1916 could have been printed anytime in the previous 20 years !

The post cards were sent by people from a wide range of locations , Cheshire, Yorkshire, Nottingham and Cambridge for example. Amusingly one person thought the writing on one post card was in French not knowing or recognising the Welsh .

Peter Masters



Copyright Francis Frith: 1901



Copyright R.O Roberts Abersoch: 1908



# ABERSOCH

## The Welsh Riviera

**Abersoch & District Information Centre**  
**Canolfan Hysbysrwydd Abersoch a'r Cylch**  
**Abersoch • LL53 7AP**

☎ 01758 712929  
enquiries@abersochtouristinfo.co.uk  
www.abersochtouristinfo.co.uk

Photocopying facilities now available  
A4 - 10p A3 - 20p



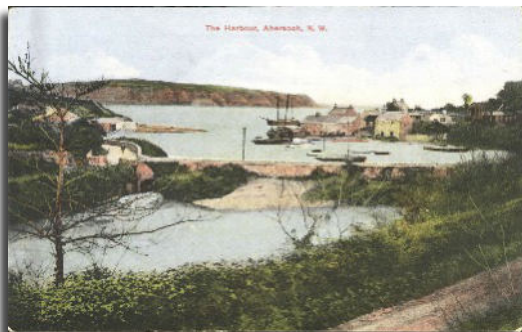
### PLEASE NOTE

The ADTTA Ltd. Abersoch brochure and members list of available accommodation for letting has been compiled for your convenience, from information supplied to us from our members. Whilst every effort has been made to ensure accuracy in this publication, the ADTTA Ltd. can accept no liability for any errors, inaccuracies or omissions or for any matter in any way connected with or arising from the publication of the information.

It is the policy of the ADTTA Ltd. to ensure that all our members will comply with the Wales Tourist Board's grading schemes or those of the AA and RAC and comply with current legislation during 2003.

Cover photographs used with  
kind permission of **TURTLE**©

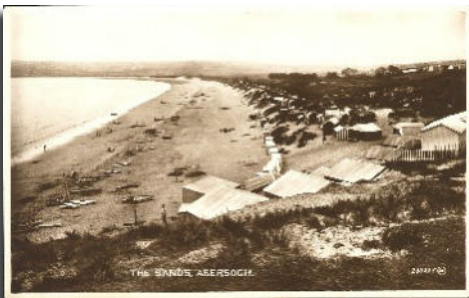
Registered in England and Wales • Reg. No. 301942



Copyright Valentine :1916



Copyright Tuck's Post Cards : 1958



William Griffith & Son

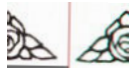
Ladies and Gents'  
TAILORS.



SUMMER APPAREL

And

GENERAL DRAPERY



Opposite Post Office

And

Bodawen, Abersoch



Copyright Photo

The Harbour From The Bridge

G.O.Jones

## Sunday Services

Abersoch village

**Congregational Church**, Abersoch . Founded 1831

Rev John H Pugh , B . A. , Minister

10 a.m., 2 p.m 6 p.m -- Welsh Services .

11.15 a.m -- English Services during the summer  
Months

**Y Graig, Church**, Welsh Presbyterian , Abersoch.

Founded 1914 . Rev R.P Own , B . A., Minister

10 a.m., 2 p.m 6 p.m -- Welsh Services .

10.30 a.m -- English Services during the summer  
Months

**St. Johns Misssion**, Welsh Episcopal Church,  
Abersoch. Founded 1911

Rev H.R.Roberts, B.D., Rector

Welsh services. English Services

Holy communion 8 and 11 a.m, Second Sunday  
in the Month

(See also next page. )

# Cae Du Dairy

## *Abersoch*

Phone 34

*Proprietor :*

**D. R. Williams.**

---

NOTED FOR . .



**Thick Rich Cream**

---

Premier Dairy to declare war  
on Tuberculosis

Safe Protection for Children

Herd regularly Tested by County Vet

Guarantee behind our Bottled Milk.

**Prompt Delivery**



Llanengan Church

Abersoch District

**Llanengan Parish Church.** 1¼ Miles

Rev H . R . Roberts, B.D., Rector

Welsh services . . . English Services

Holy Communion ( Summer months) 8 and 11 a.m, First

Sunday in the Month. . . . . Matins, 11 a.m.

**Bwlch and Cilan** Welsh Presbyterian Churches

Rev H . D. Lloyd B.A., B.d., Minister

10 a.m., 2 p.m 6 p.m -- Welsh Services .

**Bwlchtocyn** Congregational Church

Rev John . H. Pugh B.A., Minister

10 a.m., 2 p.m 6 p.m -- Welsh Services .

**Smyrna** Welsh Presbyterian Church, Llangian

Rev R . P. Owen B.A., Minister

10 a.m., 1.03 p.m 6 p.m -- Welsh Services .

**Talgraig** Welsh Baptist Church, Llangian

10 a.m., 2 p.m 6 p.m -- Welsh Services .

**Llangian Parish Church.** 1¼ Miles

Rev J. G. Llewelyn Davies

Welsh services, 10 a.m . . . . . English Services, 11 a.m

Evensong, 6.0 p.m . . . . . Holy communion 8 a.m, during

August and September

# W. J. WILLIAMS

*Building Contractor*

## Arwel, Abersoch.

Phone No 40.

ESTIMATES FREE FOR EVERY  
DESCRIPTION OF WORK



Suitable Building Sites for Modern villas  
And bungalows for Sale : Sewerage and  
Water Mains already laid.

FACING GOLF AND SEA

Apply to the above address, or at the offices

## Sarn Bach Road.



Copyright Photo

Lillywhite Ltd

A Pretty Harbour Snap

## THE BEAUTIES OF LLEYN PENINSULA

In its configuration the Lleyn Peninsula has many points of similarity to Italy. Climatically there are striking resemblances. In Lleyn, where as one enthusiastic visitor puts it , “ the sun works overtime” will be found in abundance of subtropical plants and trees , including Eucalyptus, Date Palms, Dracaenas , Veronicas, New Zealand Flax, Mediterranean Heath, Myrtle, Hydrangeas, Fuschias, etc. Apart from its health-giving properties not to a few visitors are attracted to Lleyn by the famous WHISTLING SANDS at Porthoer Bay, near Aberdaron. Even Italy cannot boast such sands the nearest being on the Coast of Africa.

It might be asked how is it possible for those who do not own a motor car to enjoy all these charms and novelties, as Lleyn is train less ? ( not a few nerve racked individuals consider this an incalculable boon. ) To cater for this class the Tocia Motor Coaches are running trips right along the Peninsula.

“TAWELFOR”

*Abersoch*

# Private Hotel

Beautifully situated facing Sea  
Few minutes from GOLF, TENNIS, and BEACH  
Lovely Views of Sea and mountain from all windows



*On bus Route From Pwllheli, Criccieth, etc*

Post Office, Llanengan

---

Cars for Hire

*Meet all Trains.*

Phone 43.     **W B Freeman Jones**, Proprietor



Copyright Photo

Lillywhite Ltd

Porth Neigwl With Bardsey Island In The Distance

HELLS MOUTH BAY, or PORTH NEIGWL, four miles long is very bracing. It is a stony beach bounded by cliffs of glacial drift, crumbling clay, sand and gravel, with many interesting fossils .

.. BRYN CETHIN DAIRY FARM ..  
**ABERSOCH.**

---

Pure Milk from Tuberculin Tested  
:: Prize cows ::

TWO DELIVERIES DAILY

---

Fresh eggs Butter and Cream to Order

**H D Evans** Proprietor

---

**Choice Lots of Freehold Building Land for Sale**

**J. W. THOMAS,**  
Coal Merchant :: Haulage Contractor,  
Furniture Remover,

THE GARAGE ST. TUDWAL'S HOTEL

**ABERSOCH**



Terms : Cash on Delivery

Long Distance a Specialty

*The House for Price, Style  
and Quality*



**AMOS PRYTHERCH**  
BOOT AND SHOE DEALER  
**Bridge Stores, Abersoch**

LADIES and GENTS CLASSICAL FOOTWEAR

Always in stock

WHITE SUMMER SHOES In Large Variety



Copyright Photo

Abersoch Pass

Lillywhite Ltd

WALKS, - There is plenty of scope for those pedestrians to tire themselves out without feeling any sense of monotony in the landscape. Indeed this form of recreation is highly recommended on account of the bracing uplands

If it's a **House** you want  
.. ENQUIRE OF ..  
**OWENS & BAKER**, Ltd  
BUILDERS AND CONTRACTORS

---

**Villas , bungalows, etc, built to order.**

Estimates Free. Personal Supervision on all work undertaken  
REPAIRS OF ALL KINDS GUARANTEED  
Registered Office

**ERW FAIR, ABERSOCH**

Richard Williams  
.: The Smithy :.



ABERSOCH

All Manner of Ironwork  
Undertaken

OWEN JONES

Family Butcher  
(opposite Barclays Bank )



ONE QUALITY ONLY -

THE BEST

PHONE 32



Copyright Photo

The Golf Links

Lillywhite Ltd

Just beyond the town and following the coastline for  
considerable distance are the famous Golf Links  
( See pages 8 ad 9 )

**AT LAST !**

Ladies & Gents Hairdressing  
And Shaving Saloon.

**Charles Jones**



Cigarettes, Tobacco  
Pipes, Drinks, etc

CIVILITY and PROMPT ATTENTION

# Evan Henry Williams

Coal Merchant, etc.  
Haulage contractor

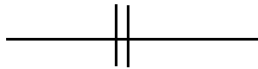
---

Pen-y -Graig :: Abersoch

## **J.H.JONES & Son,**

Painters, Decorators and  
Paper Hangers

ADDRESS--



## **Coedmor, Abersoch**

Phone 2



Copyright Photo

G.O.Jones

#### Aviation

In September , 1928 Mr Kenneth Twemlow, of the Lancashire Aero club, found the beach of Abersoch a suitable landing place and made flights over the bay, taking friends and visitors with him several times . He flew from Manchester to Abersoch in under two hours, taking wife and baggage with him.

---

The cover design for this book , representing Sport , has been specially drawn and adopted as a crest for Abersoch. The words in Welsh “Dafar Ymweliad “ meaning “Prize (or Reward ) for visiting “ and “ Hedd ac Adloniant “ I,e “Peace and Enjoyment “ are quite appropriate for a place fulfilling all the requirements of holiday-makers.

For the design we are indebted to Anthony Minoprio, Esq, a resident.

---

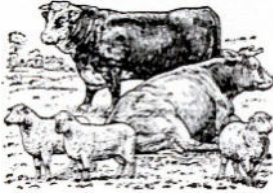
Suggestions for the improvement of this Guide Book will be welcomed by the publishers . Amateur photographers and others are kindly requested to submit snap-shots, etc., to the secretary :

ALL WAYS LEAD TO ABERSOCH !

But you cease to roam in search of Quality  
Once you purchased from

**J. Victor Roberts**

*PURVEYOR OF HIGH-CLASS MEAT*



ONE QUALITY ONLY  
THE BEST.

Parcels sent to all parts at Special Rate  
Note the Address :

**CENTRAL MEAT STORES**  
**ABERSOCH**

**H.W.THOMAS**

GENERAL DRAPER, GROCER and  
PROVISION DEALER,

**Eagle House, Sarn bach**  
**Abersoch**

DEALER IN TEA OF THE FINEST BLEND

GIVE IT A TRIAL !



Copyright Photo

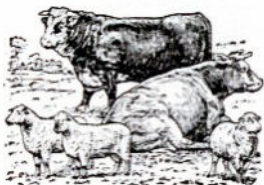
G.O.Jones

The Sand dunes From The sea

The coast line is a happy playground for young and old alike. Even when the tide is out bathers who cannot swim a venture with safety for hundreds of yards seaward. The sands are firm and entirely void of beds of stones which so often mar the pleasure of seaside bathers

## WM. JONES & SONS

. . *FAMILY BUTCHES* . .



SHOP LLANGIAN,  
Abersoch, Llanbegrog,  
LLWYNONN FARM,  
ABERUCHA  
POULTRY FARM.



POULTERERS

HOME GROWN VEGETABLES

REAL WELSH LAMB A SPECIALTY

Miss J Williams

Grocer and Provision Dealer

Bryn Awel Stores  
Bwlchtocyn, Abersoch

**BASIL CHERRY**

The Decorator

**ABERSOCH**

# *GLYN-Y-WEDDW*

(The Widows Glen)

## Famous Art Gallery & Gardens

Is situated in the Parish of Llanbedrog, 3 miles from Abersoch and 4 miles from Pwllheli, and is reached by motor bus from either of these resorts.

OPEN FROM EASTER TO OCTOBER



Glyn-y-Weddau, Pwllheli Entrance Hall

Photo © C. J. Photos

Over **400** Paintings by eminent Artists.

A splendid Collection of Swansea and Nantgarw porcelain, and various interesting objects of Art have been recently added

**AFTERNOON TEAS. ORCHESTRA IN SEASON**

Do not fail to see this beautiful place while in North Wales

Admission **6d.** Children Under 12, **3d.**

Combined tickets, including return bus fare from Abersoch **1/-** : children **12 7d.**

Special terms for Parties

**S ANDREW & SON.**

## LIST OF APARTMENTS.

Description.	Name.	Address.	sr	br	Remarks.
Apartments	Mrs. Davies	Wylfa, Abersoch	2	4	* Near Golf and Beach.
F. or A.	Mrs. Roberts	Tegfryn, Bwichtocyn, Abersoch.	2	4	Detached; Beautiful Scenery; Easy reach to Golf and Beach
F. or A.	Mrs. Evans	Mur Cwpl, Cilan, Abersoch.	2	4	Fine Scenery. Garage
Apartments	Mrs. Wheeler	Tan-y-Marian, Abersoch	2	6	Modern Conveniences
Board Residence or Apartments.	Miss Williams	Bryn Mor Abersoch.	2	5	* Modern Conveniences, Garage; Sunny; Well Recommended
Apartments	Mrs. Williams	Olgra, Abersoch	3	7	* Facing Sea, 2 mins. from Golf & Beach through Private Park; Electric Light. All Mod. Conveniences
Apartments	Mrs. Williams	Rockdale, Abersoch	2	6	* Facing Sea, 2 mins. from Golf & Beach through Private Park; Electric Light; Modern Conveniences
F. or A.	Mrs. Thomas	Castell, Abersoch.	2	6	* Modern Conveniences; Garage
F. or A.	Mrs. Lewis	Hafod, Abersoch.	2	4	* Modern Conveniences
F. or A.	Mrs. Williams	Belmont, Abersoch	2	6	* Modern Conveniences; Sea View Garage
F. or A.	Mrs. Jones	Goleufryn Farm Hse., Abersoch	2	5	Detached; Reserved Situation
F. or A.	Mrs. Owen	Arlanfor, Abersoch	3	8	Fine Sea and Mountain View; Modern Conveniences; 2 mins. to Beach
Apartments	Mrs. Cherry	Roslyn, Abersoch.	2	4	* Close to Beach, Golf and Shops; all conveniences
Furnished	Miss Williams	Tyddyn Calod, Abersoch.	2	6	In Own Grounds, Fine View from Observatory; outside sanitation
Furnished or Apartments.	Mrs. Jones	Wnnton, Abersoch.	2	5	* Modern Conveniences; Close to Beach and Golf
F. or A.	Miss Roberts	Elm Bank, Abersoch.	2	5	* All Modern Conveniences
F. or A.	Mrs. Morris	Cartrefle, Abersoch.	2	4	* All Modern Conveniences; 2 mins to Beach
Board Residence or Apartments.	Mrs. Williams	Gwynfa, Roslyn Drive, Abersoch.	3	7	* All Modern Conveniences; 1 min. to Beach; Own Grounds

Description.	Name.	Address.	sr	br	Remarks.
Board Residence or Apartments	Miss Jones	Llwyn, Roslyn Drive, Abersoch	3	6	* Modern Conveniences; Sea and Mountain View; 2 mins. to Beach
	Mrs. Parry	Trofa, Abersoch	3	8	* Modern Conveniences, Beach Hut, close to Golf & Beach. Elec. Light
Furnished	Mrs. Pritchard	Carisbrooke, Abersoch	3	8	Modern Conveniences; Fine Sea & Mountain View
F. or A.	Mrs. Parry-Griffith	Angorfa, Abersoch	2	6	* All Conveniences, Garage, Beach Hut
Apartments	Mrs. Roberts	Glasfor, Abersoch	3	6	All Conveniences, Electric Light; Close to Beach
F. or A.	Mrs. Williams	Hendra, Abersoch	2	4	* All Conveniences; Grand View
F. or A.	Mrs. Williams	Dolrbedyn, Abersoch	2	4	* All Modern Conveniences; Own Grounds; By Beach and Golf; Electric Light
	Mrs. Owen	Rose Cottage, Abersoch	2	4	All Modern Conveniences; Close to Beach and Golf; Recommended
Apartments	Mrs. Richardson	Bronwydd, Abersoch	2	6	* All Modern Conveniences; Close Beach and Golf; Recommended
F. or A.	Miss Ellis	Argraig, Abersoch	3	7	Convenient to Beach and Golf; Fine Rural View
Apartments	Mrs. Jones	Dolfryn, Abersoch	2	4	* All Conveniences; Splendid View
Apartments	Mrs. Jones	Coedmor, Abersoch	2	5	* All Conveniences; Close to Beach and Golf
F. or A.	Mrs. Griffith	Morwel, Abersoch	3	6	* Modern Conveniences. Ideal pos.
F. or A.	Miss Williams	Ynysfor, Abersoch	2	4	Sea and Mountain View, nicely Situated
F. or A.	Miss Robyns Owen	Sunnyside, Llanengan, Ab'soch.	2	4	Lovely Rural Cottage, in Own Grounds; Garage & Conveniences
Furnished	Mrs. Schottler-Jones	Trewarren, Abersoch	2	5	Own Grounds, All Modern Conveniences; Garage, Electric Light Fine Sea and Mountain View; 3 mins. to Sea

Description.	Name.	Address.	sr	br	Remarks.
F. or A. ....	Mrs. Johnson .....	Bodlondeb, Abersoch.....	4	6	Modern Conveniences, Charming Situation. Dairy Products
Apartments .....	Miss Williams .....	Egryn, Abersoch.....	2	8	All Modern Conveniences, Garage; Fine View Sea & Mountain
F. or A. ....	Mrs. Jones .....	Craig-y-Don, Abersoch.....	2	5	* All Modern Conveniences, Beach Hut
Apartments .....	Mrs. Roberts .....	Central Meat Stores, Abersoch..	2	4	* All Conveniences; Most conveniently situated Golf & Beach
F or A .....	Mrs. Morris .....	Arfonia, Abersoch.....	3	6	* All Modern Conveniences; Close to Beach and Golf Own grounds.
Apartments .....	Mrs. Jones .....	Pen-y-Bont, Abersoch.....	3	8	*All Modern Conveniences
Apartments .....	Miss Roberts .....	Sidney Villa, Llanengan, Ab'sch	1	4	Fine Sea View & Outside Sanitation
Apartments .....	Mrs. Williams .....	Pen Arwel, Abersoch.....	3	6	All Conveniences, Electric Light, Garage; Near Golf and Beach
Apartments .....	Mrs. Roberts .....	Gwynant, Abersoch.....	2	4	* Modern Conveniences; Nice Rural View
F. or A. ....	Mrs Thomas .....	T'yn Don, Llanengan, Abersoch	2	9	All Conveniences; Garage; E. Light
Furnished .....	Mrs. Griffith .....	Glyn, Abersoch.....	2	5	*All Modern Conveniences; Splendid View S. & M., Tennis Ct., Phone, Garage; 3 acres Private Grounds
Furnished .....	Miss Jones .....	T'yn-y Mur, Abersoch.....	2	3	Commanding Position; Free Shooting; Modern Conveniences
Apartments .....	Mrs. Williams .....	Arwel, Bwlch Tocyn, Abersoch.	2	4	All Conveniences, Garage; 5 mins. Beach and Golf
Furnished with Attendance.	Mrs. Evans .....	Garth, Abersoch.....	2	5	Modern Arrangements, E. Light; In Own Grounds, abutting on Beach; Bathing Huts
Furnished .....	Do. ....	Garth, Bungalow, Abersoch.....	2	5	All Conveniences; Electric Light
F. or A. ....	Mrs. Johnson Hughes,....	Fron Oleu, Abersoch.....	3	6	All Conveniences; Splendid View; Own Grounds
Apartments .....	Mrs. Thomas .....	Creigrir Wen, Abersoch.....	5	5	Farm House and Garage, Command-in-3 Position

Description.	Name.	Address.	sr	br	Remarks.
Apartments	Mrs. Williams	Cae Du, Abersoch.....	2	4	Dairy Farm, Garage; Easy reach Golf and Beach; Phone 34
F. or A.	Mrs. Freeman Jones.....	Tyn Fwll, Llanengan, Ab'soch.	2	5	5 Bedrooms. 2 Sitting Rooms; near Beach
Apartments	Mrs. Jones Do.	Rhianfa, Sarn Bach, Abersoch..... Also Furnished Cottage.....	2	4	Poultry Farm, Garage; Splendid View
Furnished	Mrs. Roberts	The Cottage, Abersoch.....	3	6	All Conveniences, E. Light, Garage, Fine Sea and Mountain View
Furnished	Miss Wilson	Nvth, Bwlchtocyn, Abersoch.....	1	4	Almost on Beach
Apartments	Mrs. Lloyd-Humphreys.....	Aber View, Abersoch.....	2	4	Modern Conveniences, Garage; Commanding Position
Furnished	Mrs. Owen	Craigle, Abersoch.....	2	6	* All Modern Conveniences; Splendid View
F. or A.	Mrs. Roberts	Morlais, Abersoch.....	2	6	* All Modern Conveniences; Close to Golf and Beach
Apartments	Mrs. Jones	Hyfrydle, Bwlchtocyn, Ab'soch.	2	5	All Conveniences, Farm Produce; Commanding View, Near Beach and Golf
Apartments	Mrs. Evans	Wenallt, Abersoch.....	2	6	* All Modern Conveniences, Near Beach and Golf
Apartments	Mrs. Owen	Bryn Goleu, Bwlchtocyn, Ab'ch	2	3	Commanding View of Sea and Mountain; Close to Beach & Golf
F. or A.	Mrs. Hughes	Islwyn, Abersoch.....	3	5	* All Modern Conveniences; Panoramic View
Furnished	Rev. H. R. Roberts (Rector)	Rector's Bungalow, Abersoch.....	1	5	* All Modern Conveniences; on Beach. Also Cottage
F. or A.	Mrs. Harries	Warren, Sandy Beach, Abersoch	3	7	Modern Conveniences; Close to Beach and Main Road
Furnished	Mrs. Sandys-Winch	Llanarth, Abersoch.....	3	8	All Modern Conveniences; Beautifully Situated, Own Grounds
Furnished	Mrs. Grif. Williams	Neigwl, Abersoch.....	3	6	Beautifully Situated in Own Grounds; All Conveniences; Facing Sea; Electric Light

Description.	Name.	Address.	sr	br	Remarks.
Apartments	Mrs. Williams	Pen-y-Graig, Abersoch	1	3	An ideal spot for fine view; Close to Beach
Apartments	Mrs. Sorton-Williams	Tanybryn Farm, Sarn Bach, Ab.	2	5	Just the thing for a nice Holiday in a Farm; all Produce
Furnished	Mrs. Yates	Haulwen, Abersoch	1	4	Excellent View, Own Grounds; on 'Bus Route
Furnished	Miss Evans	(Apply, Tawelfor, Abersoch) Pentraeth, Abersoch	2	6	Semi-Bungalow, Beautifully Situated, Own Grounds; all Conveniences
Apartments	Mrs. Davies	Belle Vue, Llanengan, Abersoch	2	6	Modern Conveniences; Beautifully Situated, near Hall's Mouth; Garage
F. or A.	Mrs. Williams	Arddol, Abersoch	1	4	*Modern Conveniences. Charming Sea and Mountain View
F. or A.	Mrs. Jones	Fairholme, Abersoch	1	4	*Modern Conveniences. Charming Sea and Mountain View
Apartments	Miss Pugh	Pen-y-Bryn, Abersoch	2	4	Charming Situation. Modern Conveniences
Apartments or Furnished	Mrs. Jones	Derlwyn, Abersoch	2	4	Beautifully situated Bungalow, Own Grounds. Conveniences. Garage.
Apartments or Furnished	Mrs. Lloyd Pugh	Daufryn, Abersoch	2	5	Fine Scenery. All Conveniences
F. or A.	Mrs. Williams	Gwelfor, Abersoch	2	3	Beautiful, quaint Cottage, with full view of Sea and Mountain; recon.

\* These Advertisers wish us to state that their water supply is derived from the Abersoch Water Company's reservoir.

**THE TOCIA  
MOTOR OMNIBUS Co., LTD.  
ABERDARON, ABERSOCH, CRICCIETH & PWLLHELI**

---

The Premier Motor Company for South Carnarvonshire  
and Lleyn Peninsula.

---

Daily Services between  
**PWLLHELI (Railway Station), ABERDARON,  
LLANBEDROG, ABERSOCH, LLANENGAN,  
LLANGIAN and CRIGCIETH.**

**SPECIAL SUMMER SERVICE**  
in connection with departure and arrival of Pwllheli  
Trains. For particulars see L.M.S. and G.W.R.

Time Tables.

**Regular Routes :**

1. LLANBEDROG, ABERSOCH, LLANENGAN  
and LLANGIAN.
2. LLANBEDROG, NANHORON, SARN and  
ABERDARON.
3. RHYCLAFDY, LLANIESTYN, SARN and  
ABERDARON.
4. FOUR CROSSES, CHWILOG and CRICCIETH.

Booking Office : Imperial Garage, Station Sq.

---

**Private Motor Cars.**

**School Trips, Picnics, etc., specially catered for.**

Time-Tables, Booklets and all information from :—

**The Manager, Imperial Garage;**

**R. Griffith, Secretary, Moranedd, Aberdaron;**

Phone —59 Pwllheli

Facsimile Produced  
by



Peter Masters  
Armchair History  
Llanaelhaearn  
Gwynedd  
LL54 5AE  
01758 750322